



Visit product page



## IEM-100

L005790

Wireless in ear monitor system, freq. range UHF 863-865MHZ, IR sync downloading the frequency from receiver, LCD display shows the RF level, AF level, channel and frequency, 200m line-of-sight operating range.

### TECHNICAL DETAILS

#### Features

UHF 863-865MHz frequency range

Mono Outputs, four levels RF output selectable

True diversity for maximum range and dropout protection

PLL Synthesized circuit

IR sync downloading the frequency from receiver

LCD display shows the RF level, AF level, channel and frequency.

EIA standard 1/2U rack-mountable metal chassis

Up to 200m line-of-sight operating range

Designed for professional stage performance applications.

## **Technical Specifications**

### **Receiver(Belt-pack)**

Frequency Range: 863-865 MHz.

Transmission Method: FM, Mono.

Frequency Response: 60Hz-17KHz.

Total Harmonic Distortion: <0.7% at 1KHz.

Signal/Noise Ratio:  $\geq 105$ dB.

Earphone output: 3.5mmö/ 16ohms 105mW.

Receiving Sensitivity: 10dBuV(80dB S/N).

Battery Voltage: 3V (2x1.5V AA Battery).

Power Consumption: 8 hours, battery-dependent.

### **Transmitter**

Frequency Range: 863-865 MHz.

Transmission Method: FM, Mono.

Transmitter Power: 5/10/30/100mW.

Frequency Response: 50Hz-17KHz.

Total Harmonic Distortion: <0.5% at 1KHz.

Deviation: 45KHz.

Input impedance: 32ohms.

Power Supply: DC12V-18V / 500mA .

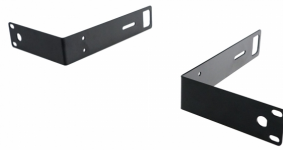
### **Packing Details:**

Carton box for 1 pc: 43 x 32 x 10 cm - 5 kg

PHOTOS



ACCESSORIES



KZ AS16 PRO

IWM-R2

IWM-R1

IWM-Case

KZ ASX

Rack mount accessory for 2 receivers IWM.

Rack mount accessory for 1 receiver IWM.

Aluminum case for IWM wireless system

Professional 16-units pure balanced armature acous

Professional 20-units pure balanced armature acous

