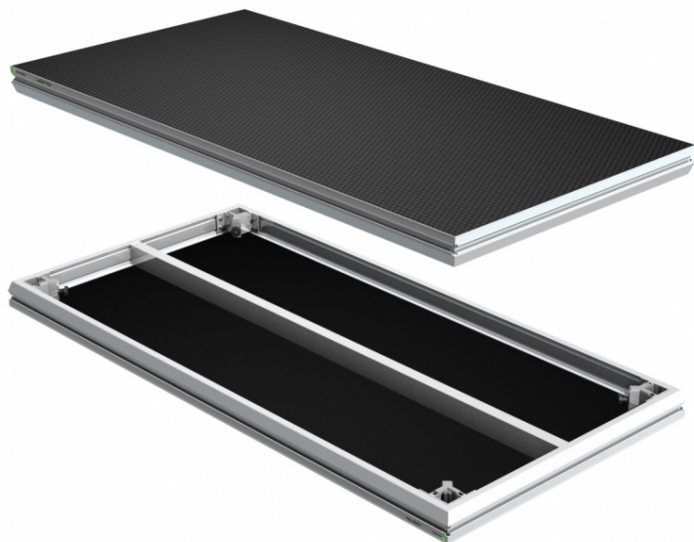




Visit product page



## FS-750H-2X1

L004710

Professional Stages Decks 200cm x 100cm TUV approved, HEXA Finish, 750kg/m 16kg per sqm stage.

### TECHNICAL DETAILS

#### Technical Details

##### CAPACITY

Loading according DIN 15921

Vertical:  $q=750\text{kg/m}^2$

Horizontal:  $q/20$

##### MINIMUM DEFLECTION

2 times lower deflection

Only 32kg for 2x1m deck

Compatible profile

Compatibility – with other leading brands.

Everdeck gives you full flexibility!

Shape improvement – angle on the outside compatible with scaffold beam without using any special adaptors.

Low storage costs – only 9cm stacking height

##### UNIVERSAL LEG CORNER

Main systems on the market provide legs 48,3 round, 50×50 square, 60×60 square. Usually to fit the leg corner you need to exchange

to the pressure cube inside the corner.

In addition the pressure cube is really tiny that's why all force is going only to the longer screw

Our new pressure cube is universal for above legs 50x50sq, 60x60 sq, and 48,3 round. There is no need to exchange anything!

To achieve this we have extended our corner. No matter what type of the leg we will use the pressure cube is always staying inside of the corner profile to give max stability.

## PHOTOS

